

CMI REPORTING

Concept Measurement Inc's CMI Reporting app allows you to:

- Pre-define large jobs offline (on a desktop or laptop) – saving your machine operators' time as they do not have to enter every piece of data.
- This information can be uploaded From CMI Reporting to our Cloud location and transferred to our WiFi (smartphone) TorqApp or our RF display via a download from the Cloud location (the RF display also allows transfer via the USB connection at rear of display).
- Convert large jobs to PDF reports. Upload/ Sync—a job (or .csv file) from the WiFi TorqApp (smartphone) - or RF Display to our Cloud location for easy file conversion/ repair/ customization in CMI Reporting. CMI Reporting also supports loading job data via a USB connection on desktop/ laptop (thumb drive).

Read USB Screen

The system scans for any relevant job data that has been exported from an HMI to a USB memory stick. Job data will also be amalgamated from each separate torque measurement tool working on the same job. Importing data from each unit will combine them into one job record.

Jobs Screen

All your previous jobs' data is stored in the CMI Sensor App. You can find how much data has been gathered from each job and for jobs where the pile data was originally entered into your computer. This app can also calculate the percentage of job completion. There are several functionalities in the Jobs Screen:

- Show PDF** - generate a single PDF report of every pile
- New Job** - add jobs to the database
- Edit Job** - edit the name and details of a job
- Export Job from HMI** - pre-select jobs ready for export
- Add New Pile** - Create new records for jobs
- Edit Pile** - Alter the header variables of a pile

Write USB Screen

Export your job/pile information to a USB. This can subsequently be used to import the information to a thumb drive display unit/HMI. You are able to export all or a select number of piles on this screen.

- Step 1** – Choose a USB memory stick to write the files to
- Step 2** – Choose the job that you wish to export the piles from
- Step 3** – Choose which piles to export
- Step 4** – Click write files

Options Screen

It is easy to make the necessary changes to the Sensor App to improve your reporting. The Options screen allows you to:

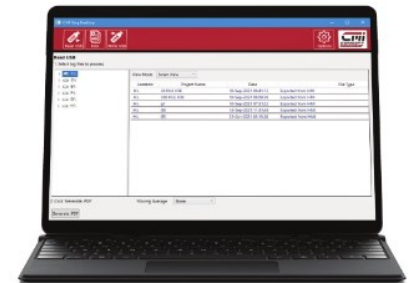
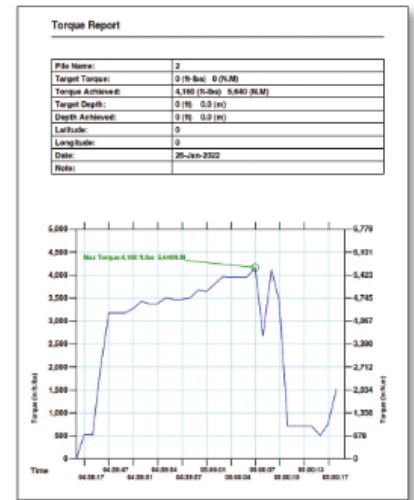
- Switch between Metric and Imperial
- Enable customer specific fields

Recovering Lost Pile Data

The CMI Sensor App is also capable of recovering missing (un-named) files from a report. The Smart View screen automatically searches all memory files and displays any recoverable jobs.

Creating a Large Number of Piles For a Job

This feature of the CMI Sensor App saves your team time and effort when working on jobs with a large number of piles. At the bottom of the "New Pile" screen is an option to enter a start and end number for a sequence of piles. One pile with these details will be added to the job for every number in the range (inclusive of the start and end numbers).



DOWNLOAD LNK: <https://conceptdownloads.com/cmireporting/Publish.html>