

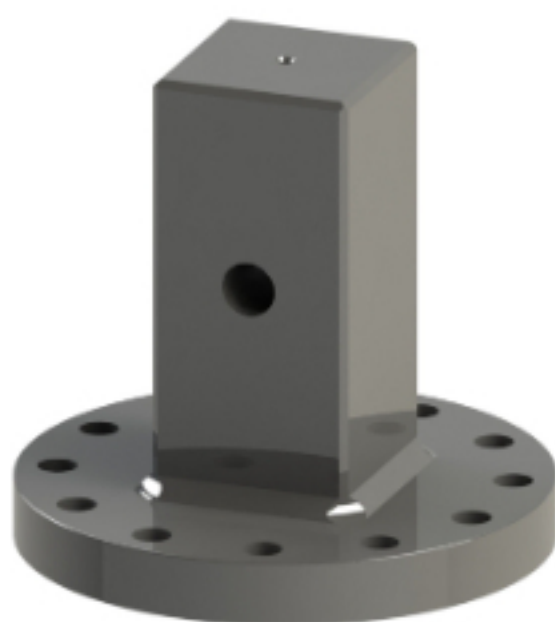


Torq Adaptor

Durable Flange X Male Shaft Adaptors

Tools That Work for You

Our Torq Adaptors are male shaft adaptors that give you the ability to convert your Torq Hub or Torq Spool to a male shaft you need to work with. This new tool gives you the ability to mimic your anchor drive output shaft.



MATCH YOUR TOOLS

Bolt on conversion of CMI Torq Hub or Spool to match drive output shaft.

SINGLE PIECE

Single piece construction from high yield alloy steel.

DURABILITY

Construction of Torq Adaptors are much stronger than welded assemblies.

MATCHED POWER

Rated for maximum output of matching anchor drive output.

QUICK DELIVERY

2", 2-1/2" & 3" Hex—and—75mm & 100mm (matching Digga drives) - available from stock.

PEACE OF MIND

All Torq Adaptors from CMI come with a one year warranty.

Let's Create a Solution That Works for You

Contact the team at Concept Measurement Inc. today to learn more about our Torq Adaptor and how it can work for your operation.

